



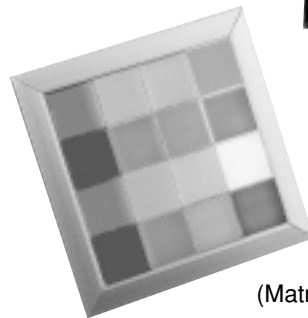
TL LED Indicator

Free Size LED Indicator

- Arrange 25 mm square size light cartridge as matrix, and make large size Indicator as you like.
- It is also used as LED backlight. (PCB mounting type available)



(Unit)



(Matrix Indicator)



(Free Size Indicator)



SPECIFICATIONS

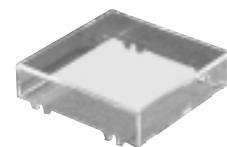
| | |
|-----------------------------|---|
| Insulation Resistance | More than 100MΩ at 500V DC |
| Dielectric Strength | 1500V AC RMS between terminals and ground (50/60Hz for 60sec. at normal ambient temperature and humidity) |
| Reverse Dielectric Strength | 150V |
| Ambient Temperature | -10°C~+40°C |
| Ambient Humidity | 45~80% RH |

LED DATA

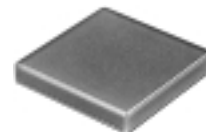
| DC Supply Voltage (V) | Current Rating (mA) | | | | | | | | | | | | | | |
|-----------------------|---------------------|-------|--------|-----------|-----------|--------------|--------|--------------|--------|-----|------------|-------------|-----------------|----|----|
| | Mono-Color | | | 3-Color | | | | | | | | | Mono, Super LED | | |
| | Red | Green | Yellow | Red/Green | | Green/Yellow | | Yellow/Red | | | Super Blue | Super Green | Super White | | |
| | | | Red | Green | Red/Green | Green | Yellow | Green/Yellow | Yellow | Red | Yellow/Red | | | | |
| DC12V (±5%) | 12 | 21 | 17 | 12 | 21 | 18 | 21 | 17 | 19 | 17 | 12 | 18 | 21 | 14 | 12 |
| DC24V (±5%) | 7 | 11 | 10 | 7 | 11 | 11 | 11 | 10 | 11 | 10 | 7 | 11 | 11 | 8 | 8 |

STRUCTURE

(Unit)



— Cover



— Filter



— Light Cartridge (LED mounted)

DIMENSIONS

| | | |
|----------------------------|--|--|
| Unit | | <div style="display: flex; justify-content: space-around;"> <div style="text-align: center;"> </div> <div style="text-align: center;"> </div> <div style="text-align: center;"> <p>Top View</p> </div> </div> |
| Free Size Indicator | | <div style="display: flex; justify-content: space-around;"> <div style="text-align: center;"> </div> <div style="text-align: center;"> <p>Panel Cut Dimension</p> </div> </div> <p>※ Panel Thickness 1mm~6mm ※ n : Row m : Column (Face size : times of 25mm)</p> <div style="display: flex; justify-content: space-around;"> <div style="text-align: center;"> </div> <div style="text-align: center;"> </div> </div> |
| Matrix Indicator | | <div style="display: flex; justify-content: space-around;"> <div style="text-align: center;"> </div> <div style="text-align: center;"> <p>Panel Cut Dimension</p> </div> </div> <p>※ Panel Thickness 1mm~6mm ※ n : Row m : Column</p> <div style="display: flex; justify-content: space-around;"> <div style="text-align: center;"> </div> <div style="text-align: center;"> </div> </div> |

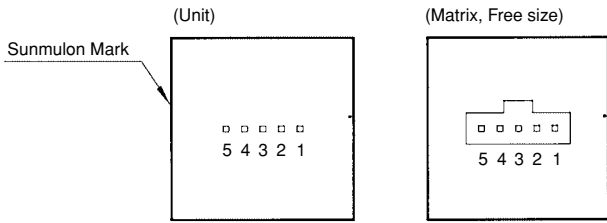
Tolerance : ±0.4mm

INTERNAL CONNECTION ARRANGEMENTS

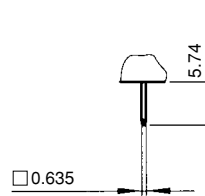
| | | | | |
|---------------------------|------------|--|------------|--|
| Mono-color | 12V | <p style="text-align: center;">Red/Green/Yellow</p> | 24V | |
| 3-Color | 12V | <p style="text-align: center;">Red/Green/Yellow combination</p> | 24V | |
| Mono-color, Bright | 12V | <p style="text-align: center;">Blue/Green/White</p> | 24V | |

TERMINAL

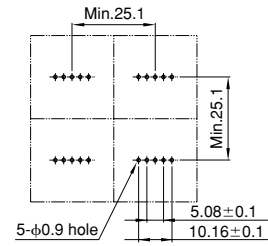
● TERMINAL LAYOUT



● TERMINAL SHAPE

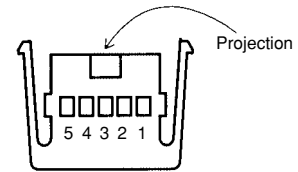


● PCB HOLE DIMENSIONS (UNIT)



| Terminal No. | Mono Color | Mono Color Bright | 3-Color (G/R) | 3-Color (Y/R) | 3-Color (G/Y) |
|--------------|-------------|-------------------|----------------------|-----------------------|-----------------------|
| 1 | Anode (+) | Anode (+) | Anode (+) | Anode (+) | Anode (+) |
| 2 | Cathode (-) | Anode (+) | Anode (+) | Anode (+) | Anode (+) |
| 3 | Cathode (-) | Cathode (-) | Cathode (-) Green | Cathode (-) Yellow | Cathode (-) Yellow |
| 4 | / | / | Cathode (-) Red | Cathode (-) Red | Cathode (-) Green |
| 5 | / | / | Cathode (-) G/R | Cathode (-) Y/R | Cathode (-) G/Y |

● CONNECTOR

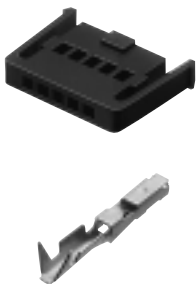


● Suitable wire

| Wire size | Diameter |
|------------|------------|
| AWG #24-28 | φ1.0~1.5mm |

ACCESSORIES

● CONNECTOR (to be appended to Free Size/ Matrix Indicator)



Part No. BL-0077

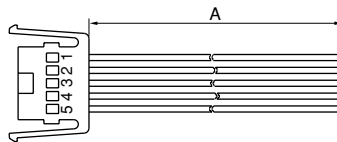
Housing

Contact Pin
Honda Tsushin Kogyo
made (HKP-F403)

Connector
(1 Housing & 5 Contact Pins)
to be appended.

● Wire Harness

Wire : UL1061, AWG26



| Pin no. | 5 | 4 | 3 | 2 | 1 |
|---------|-----|-------|--------|------|------|
| Color | Red | Green | Yellow | Blue | Grey |

| A Length | Part No. |
|----------|----------|
| 50cm | CL-0230 |
| 100cm | CL-0231 |

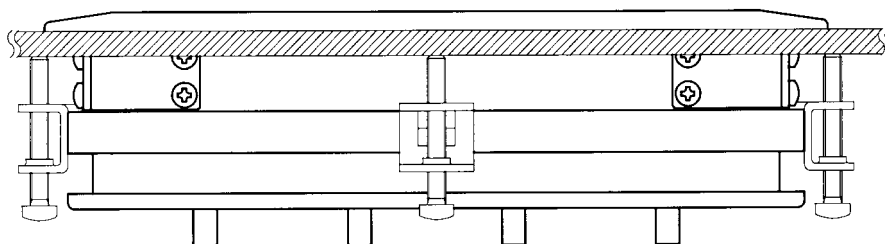
● Contact Pin press Tool



Honda Tsushin Kogyo made
(KP-309)

MOUNTING

● Mounting method for Free size/Matrix Indicators.



Fix with mounting screws(appended) from back side.

ORDERING CODE

UNIT

TL - [] [1] [2] [] [] C []

ILLUMINATION

| | | |
|----|-----------------------|-----|
| S0 | Mono-color | ※1) |
| S3 | 3-color | |
| S4 | Mono-color, super LED | |

LED COLOR

| | | |
|----|-------------|--|
| 7 | Red | Mono-color : Put color no. into the frame 1 3-Color : Put color no. into the frame 1, 2 (color combination : 87, 89, 97) ※2) |
| 8 | Green | |
| 9 | Yellow | |
| 18 | Super Green | Mono-color, super LED : Put color no. into the frame 1(3-color type is not provided) |
| 14 | Super Blue | |
| 16 | Super White | |

※1) In case of 3-color type, filter to be selected 4 (Milk White).
Simultaneous lighting while no.3 & 4 terminal is impossible.

※2) 87 Green, Red, G/R
89 Green, Yellow, G/Y
97 Yellow, Red, Y/R

SUPPLY VOLTAGE

| | |
|---|-----|
| 2 | 12V |
| 3 | 24V |

TERMINAL

| | |
|---|--------------|
| C | PCB terminal |
|---|--------------|

FILTER COLOR

| | |
|---|----------------|
| 1 | Red |
| 2 | Green |
| 3 | Yellow |
| 4 | Milk White |
| 6 | Blue |
| 8 | Lemon Yellow |
| × | Without Filter |

COVER

| | |
|---|---------------|
| C | Transparent |
| × | Without cover |

◆ "Yellow" color for LED/Filter is actually "Orange Yellow".
◇ Lemon Yellow Filter to be used with Green LED(8).

FREE SIZE INDICATOR

TL - [] × [] [] [1] [2] C [] K [] []

COLUMN

| | |
|----|----|
| 01 | 1 |
| ⋮ | ⋮ |
| 10 | 10 |

ROW

| | |
|----|----|
| 01 | 1 |
| ⋮ | ⋮ |
| 10 | 10 |

ILLUMINATION

| | | |
|----|-----------------------|-----|
| S0 | Mono-color | ※1) |
| S3 | 3-color | |
| S4 | Mono-color, super LED | |

LED COLOR

| | | |
|----|-------------|--|
| 7 | Red | Mono-color : Put color no. into the frame 1 3-Color : Put color no. into the frame 1, 2 (color combination : 87, 89, 97) ※2) |
| 8 | Green | |
| 9 | Yellow | |
| 18 | Super Green | Mono-color, super LED : Put color no. into the frame 1(3-color type is not provided) |
| 14 | Super Blue | |
| 16 | Super White | |

● Face size : times of 25mm
● 01(column) × 01(row) not available.
● Free Size Indicator is full order made.

MATRIX FRAME

| | |
|---|--------|
| K | Black |
| S | Silver |

SUPPLY VOLTAGE

| | |
|---|-----|
| 2 | 12V |
| 3 | 24V |

TERMINAL

| | |
|---|-----------|
| K | Connector |
|---|-----------|

FILTER COLOR

| | |
|---|--------------|
| 1 | Red |
| 2 | Green |
| 3 | Yellow |
| 4 | Milk White |
| 6 | Blue |
| 8 | Lemon Yellow |

COVER

| | |
|---|-------------|
| C | Transparent |
|---|-------------|

◆ "Yellow" color for LED/Filter is actually "Orange Yellow".
◇ Lemon Yellow Filter to be used with Green LED(8).

MATRIX INDICATOR

TL - [] × [] K [] [] [] []

COLUMN

| | |
|----|----|
| 01 | 1 |
| ⋮ | ⋮ |
| 10 | 10 |

ROW

| | |
|----|----|
| 01 | 1 |
| ⋮ | ⋮ |
| 10 | 10 |

According to user's specification, suffix no. will be given.

MATRIX FRAME

| | |
|---|--------|
| K | Black |
| S | Silver |

TERMINAL

| | |
|---|-----------|
| K | Connector |
|---|-----------|

● In case of Matrix Indicator, please inquiry us how to order.